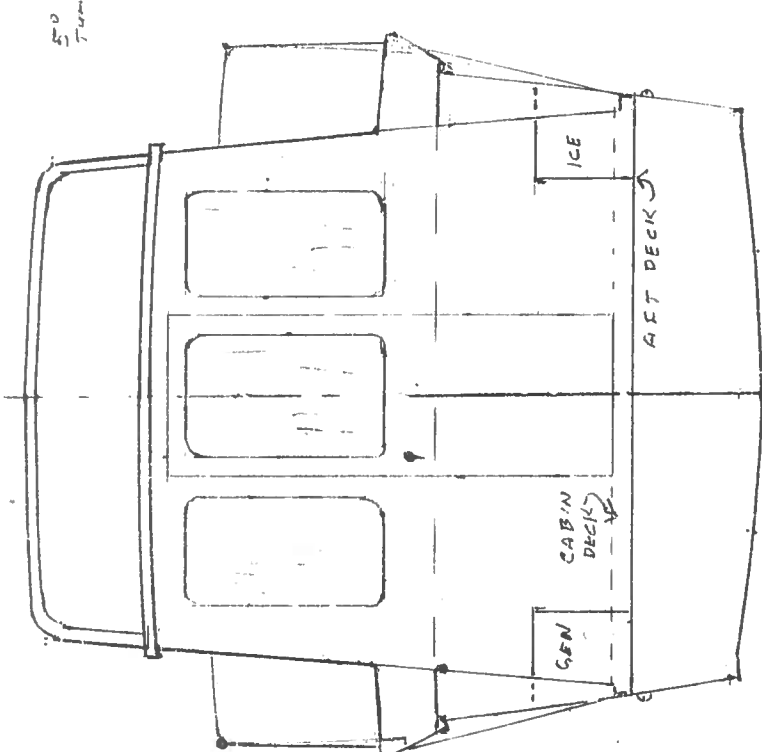


5'0"  
TURNABLE HATCHES



END VIEW - AFT CABIN BULKHEAD

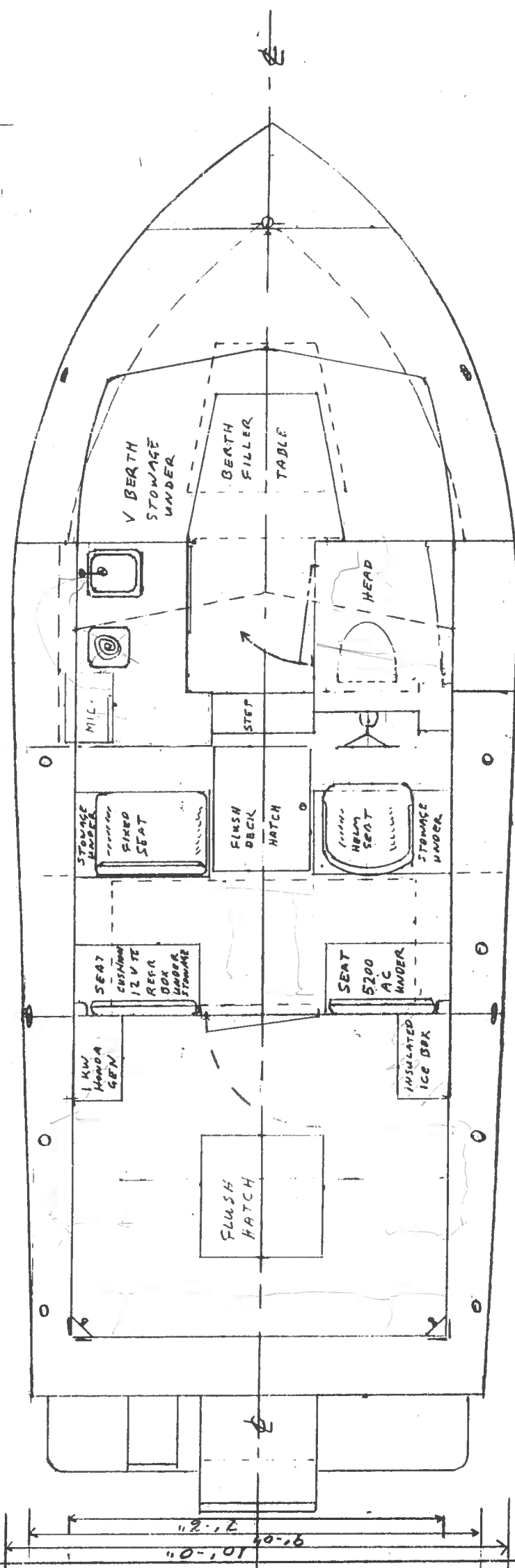
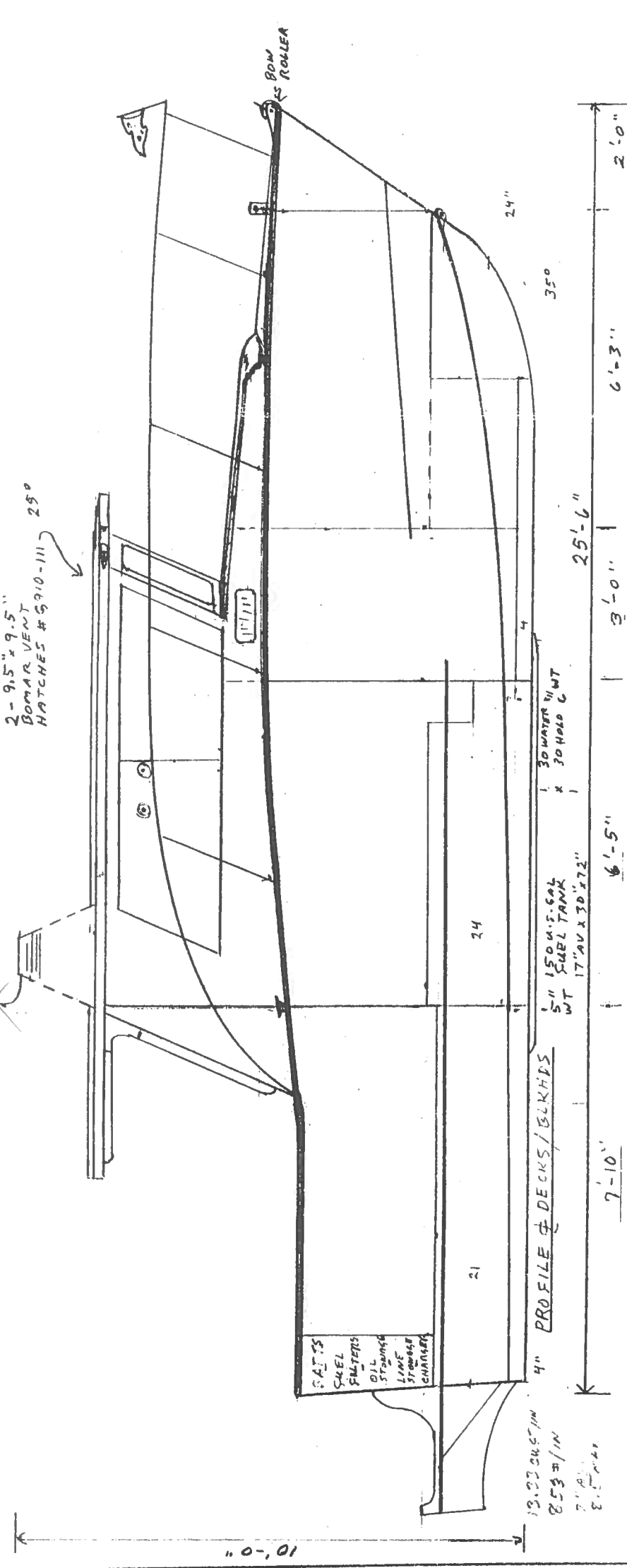
TYPE - WEEKEND CRAUISER  
FOR - CAPT. RAY DENISON  
BY - *Ray A. Denison*  
DWG # - I M R D SCALE 3/8" = 1'-0"  
UPDATE: 11-5-01  
ORIGINAL DATE: 5-18-00

PAGE 2 OF 4

DECLARATION  
This drawing/revision is the exclusive property of FPO  
MARINE PRODUCTS, INC. and may not be used or replicated without  
the express written permission of an officer of the corporation.

FPO  
FPO Marine Products, Inc.  
Manufacturing & Development

2020 2020 Ave. SE  
Maple, VA 24117  
Phone/Fax (941) 348-1335



DECK PLAN (INTERIOR)

...MARINE ALLOY ALUMINUM VESSELS FOR YOUR MAXIMUM SAFETY AT SEA...