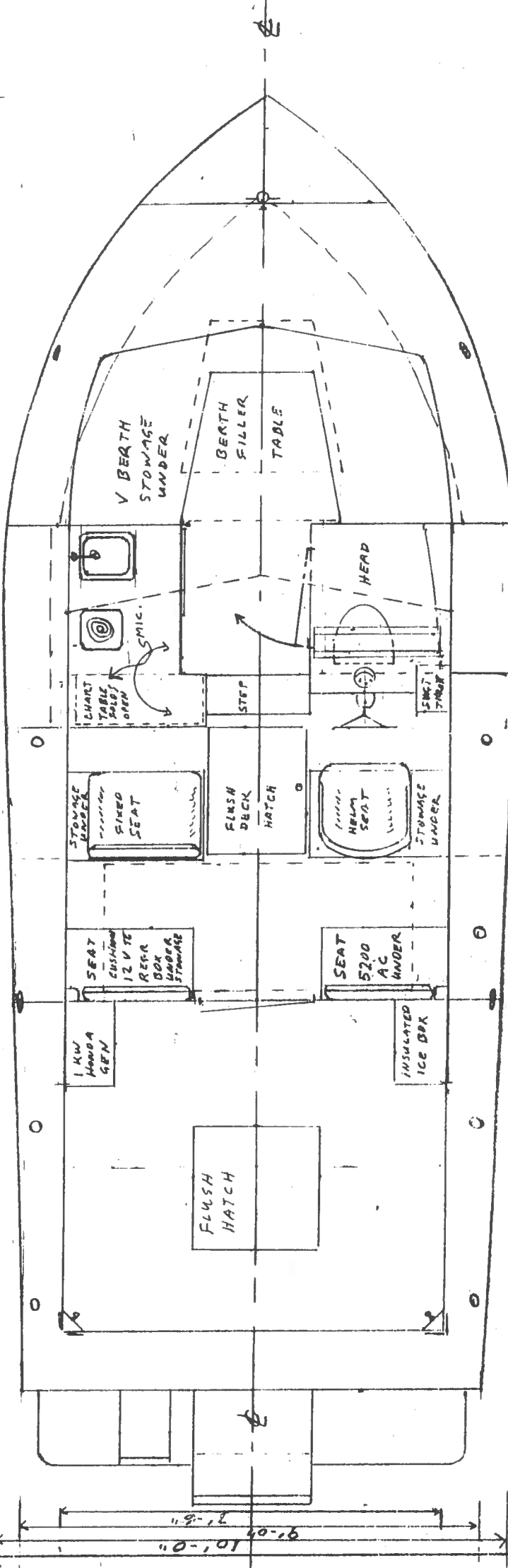
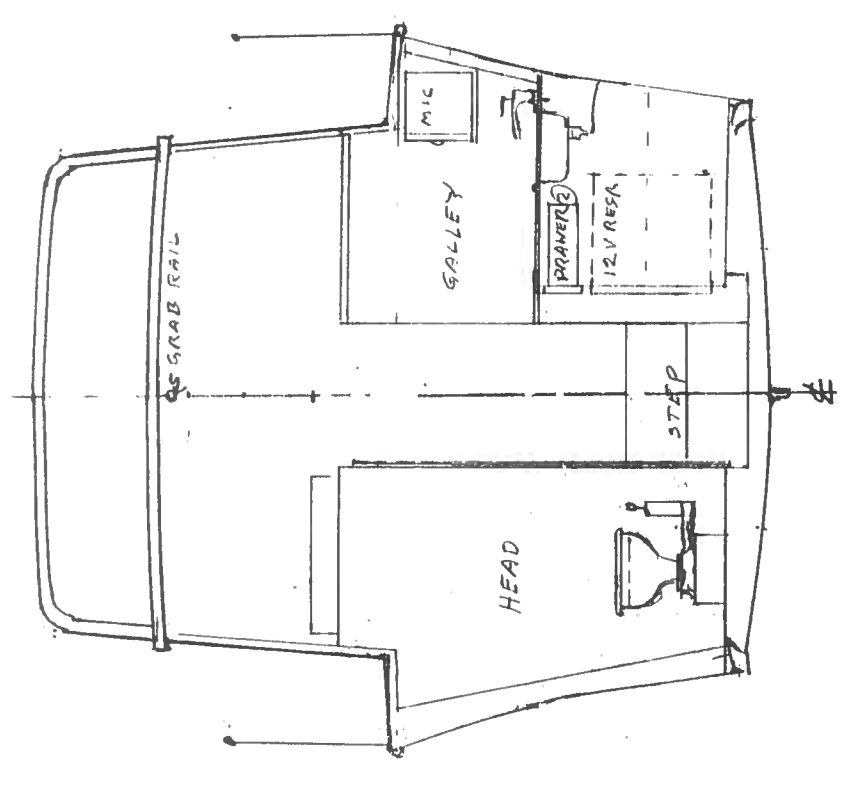


2 - 9.5" x 9.5" BOMAR VENT HATCHES # G910-III

INBOARD PORT PROFILE

CROSS SECTION HEAD/GALLEY



PLAN INTERIOR

TYPE - WEEKEND CRUISER
 FOR - CAPT. RAY DENISON
 BY - R. A. BULL N.A.
 DWG # 11 MRD SCALE 3/8" = 1'-0"
 UPDATE 11-5-01
 ORIGINAL DATE 5-18-00
 PAGE 3 OF 4
 DECLARATION
 This declaration is the collective property of the
 service providers listed, and may not be used or duplicated without
 the express written permission of an officer of the corporation.

Fico Motion Products, Inc.
 Manufacturing & Development



2000 20th Ave., SE
 Olympia, WA 98517

Phone/Fax (941) 346-1335

...MARINE ALLOY ALUMINUM VESSELS FOR YOUR MAXIMUM SAFETY AT SEA...